

GN 195 | T-shaped connecting clamps

Aluminium



- 1
- 2
- 3
- 4
- 5
- 6
- 7
- 8
- 9
- 10
- 11
- 12
- 13
- 14
- 15
- 16
- 17
- 18

MATERIAL

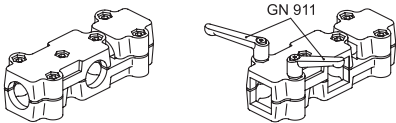
Aluminium, matte finish.
AISI 304 stainless steel screws and nuts.

STANDARD EXECUTIONS

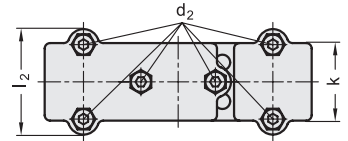
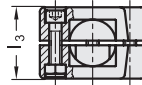
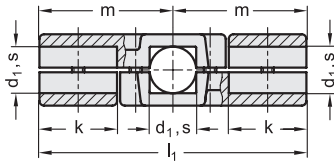
- **GN 195-BL**: natural aluminium.
- **GN 195-SW**: aluminium, epoxy resin coating, RAL 9005 black colour.

FEATURES AND APPLICATIONS

The assembly holes of GN 195 connecting clamps allow an excellent match with tubes GN 990 (see page 1954).
The clamping screw d2 may be replaced by clamping kits GN 911 (see page 1958).



Conversion Table			
1 mm = 0.039 inch			
d1			
mm	inch	mm	inch
20	0.79	40	1.57
25	0.98	42	1.65
30	1.18	45	1.77
32	1.26	48	1.89
35	1.38	50	1.97



METRIC

Code BL	Code SW	Description	d1 Hole	s Square hole	d2	k	l1	l2	l3	m	d2 Clamping kit	Δ
GN.54811	GN.54816	GN 195-B20-50-2-*	20	-	M8	50	172	68	46	86	GN 911-M8-40	600
GN.54831	GN.54836	GN 195-B25-50-2-*	25	-	M8	50	172	68	46	86	GN 911-M8-40	585
GN.54851	GN.54856	GN 195-B30-50-2-*	30	-	M8	50	172	68	46	86	GN 911-M8-40	565
GN.54871	GN.54876	GN 195-B30-60-2-*	30	-	M8	60	203	79	59	101.5	GN 911-M8-55	1128
GN.54891	GN.54896	GN 195-B32-60-2-*	32	-	M8	60	203	79	59	101.5	GN 911-M8-55	1100
GN.54911	GN.54916	GN 195-B35-60-2-*	35	-	M8	60	203	79	59	101.5	GN 911-M8-55	1038
GN.54931	GN.54936	GN 195-B40-60-2-*	40	-	M8	60	203	79	59	101.5	GN 911-M8-55	950
GN.54951	GN.54956	GN 195-B40-76-2-*	40	-	M10	76	254	98	70	127	GN 911-M10-63	565
GN.54971	GN.54976	GN 195-B42-76-2-*	42	-	M10	76	254	98	70	127	GN 911-M10-63	1586
GN.54991	GN.54996	GN 195-B45-76-2-*	45	-	M10	76	254	98	70	127	GN 911-M10-63	1550
GN.55011	GN.55016	GN 195-B48-76-2-*	48	-	M10	76	254	98	70	127	GN 911-M10-63	1510
GN.55031	GN.55036	GN 195-B50-76-2-*	50	-	M10	76	254	98	70	127	GN 911-M10-63	1470
GN.55111	GN.55116	GN 195-V20-50-2-*	-	20x20	M8	50	172	68	46	86	GN 911-M8-40	600
GN.55131	GN.55136	GN 195-V25-50-2-*	-	25x25	M8	50	172	68	46	86	GN 911-M8-40	565
GN.55151	GN.55156	GN 195-V30-50-2-*	-	30x30	M8	50	172	68	46	86	GN 911-M8-40	530
GN.55171	GN.55176	GN 195-V30-60-2-*	-	30x30	M8	60	203	79	59	101.5	GN 911-M8-55	1098
GN.55191	GN.55196	GN 195-V35-60-2-*	-	35x35	M8	60	203	79	59	101.5	GN 911-M8-55	1038
GN.55211	GN.55216	GN 195-V40-60-2-*	-	40x40	M8	60	203	79	59	101.5	GN 911-M8-55	950
GN.55231	GN.55236	GN 195-V40-76-2-*	-	40x40	M10	76	254	98	70	127	GN 911-M10-63	1550
GN.55251	GN.55256	GN 195-V45-76-2-*	-	45x45	M10	76	254	98	70	127	GN 911-M10-63	1480
GN.55271	GN.55276	GN 195-V50-76-2-*	-	50x50	M10	76	254	98	70	127	GN 911-M10-63	1390

* Complete the description of the standard item needed by adding the finish of the connector clamps: BL (blank) or SW (black).